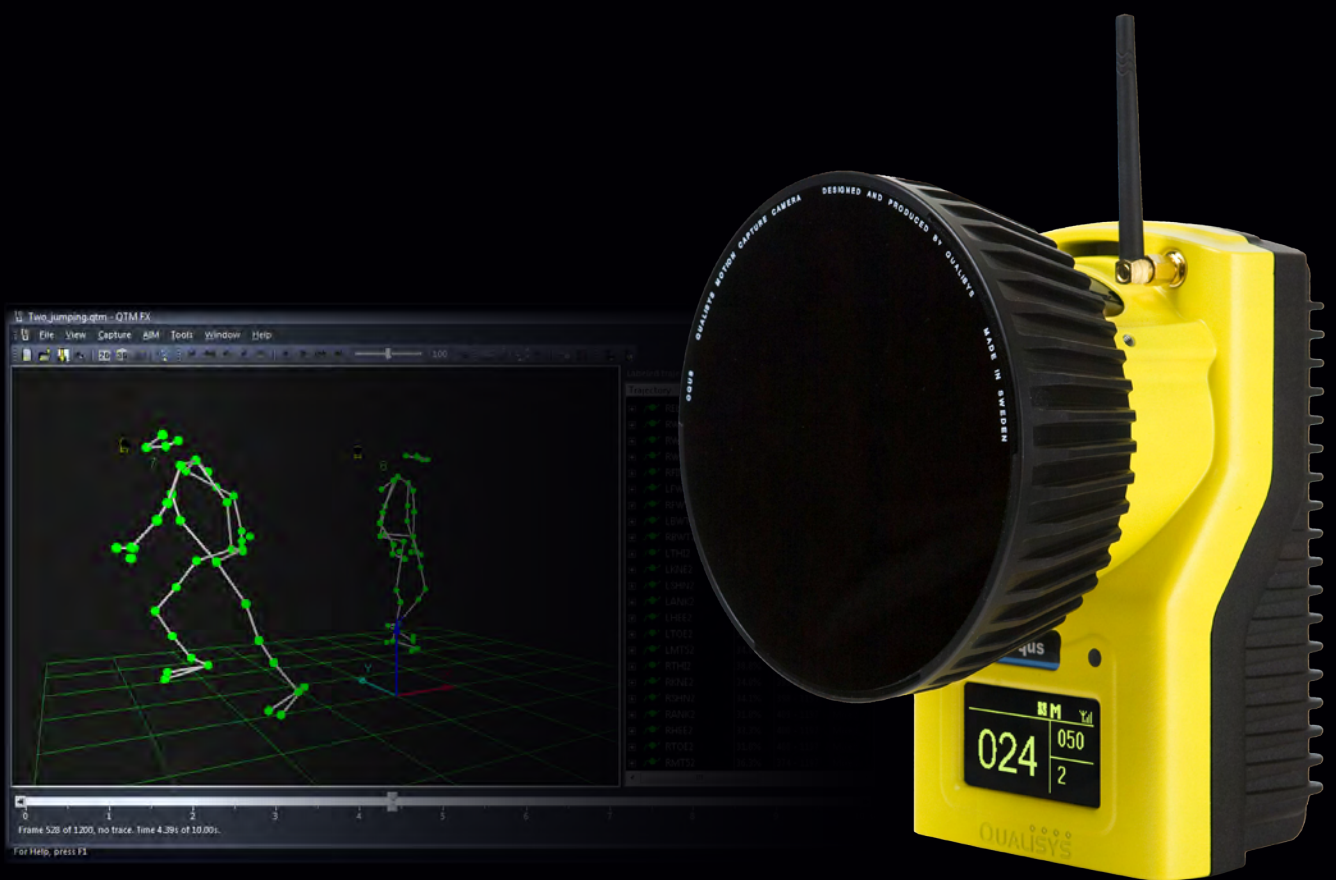




MEDIA & ENTERTAINMENT

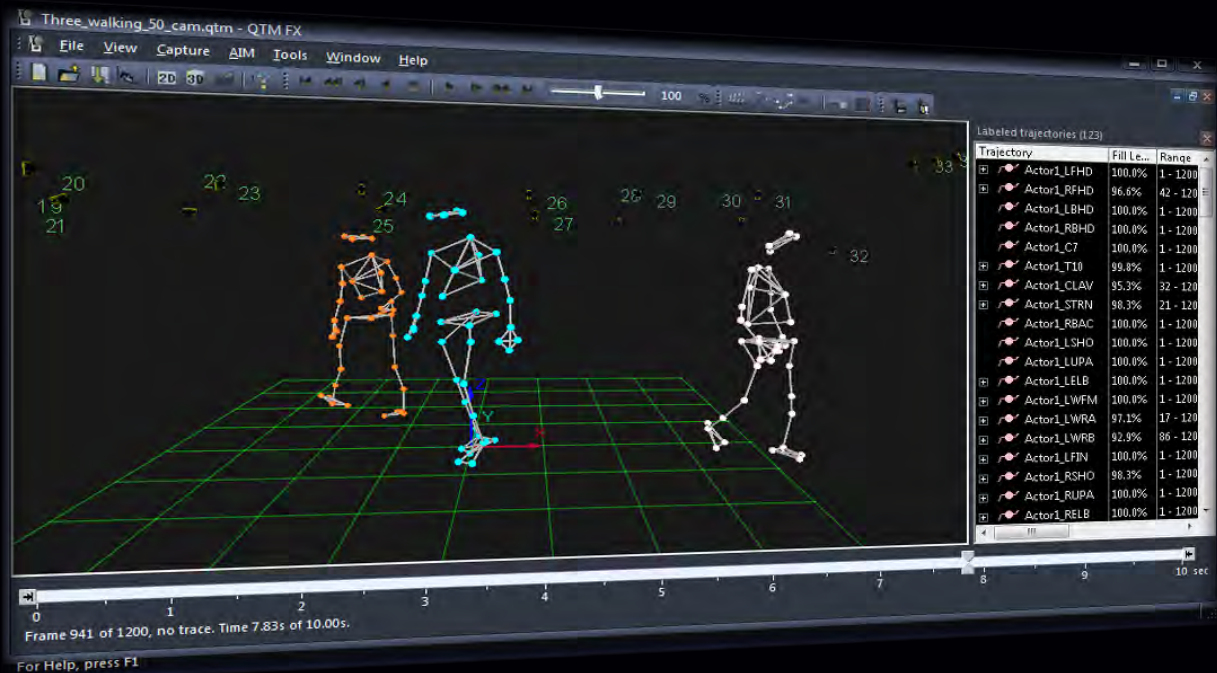


The Qualisys FX motion capture system makes it possible to capture realistic actions and performances for digital characters, as used in the entertainment industry and for virtual reality. The Qualisys motion capture technology provides highly accurate data for full body movements including hands and facial animation. The portability of the system lets you capture the action wherever it happens. The Qualisys FX system is built and developed for high performance, accuracy and low real-time latency.

KEY FEATURES

- Real-time with low latency
- Wireless communication
- Runs on a notebook or PC
- No hub or workstation
- Large measurement areas
- Motion Builder Plug-in
- Easy to use and accurate

QTM FX - SOFTWARE FOR MEDIA & ENTERTAINMENT



QTM FX is a version of the Qualisys Track Manager software that has a direct connection path to Autodesk® MotionBuilder®. By using our new plug-in it is possible to stream the mocap data in real-time directly into MotionBuilder with minimal latency and independent of frame rate. Together with the Oqus FX camera, QTM FX creates the new Media & Entertainment platform by Qualisys motion capture system.

AUTOMATIC IDENTIFICATION OF MARKERS - AIM

AIM makes the cumbersome work of labelling your markers easy by automatically identifying and labelling the markers after the initial manual labelling. It can be applied to multiple actors simultaneously and it works quickly and accurately even in real-time mode.

REAL-TIME TRACKING

QTM FX is able to track markers in real-time without any post processing and the system tracks and analyzes movements with a latency of less than 10 milliseconds. You can even stream this data directly into Autodesk MotionBuilder so you can see your digital characters act as your real life actors moves.

MOTION BUILDER PLUG-IN

The Qualisys developed MotionBuilder plug-in is what makes it possible to stream the motion capture data from QTM FX to MotionBuilder. It works in real-time with minimal latency and independently of frame rate.



OQUS FX - MOTION CAPTURE CAMERA

The Oqus FX line of cameras is the backbone of the Qualisys FX motion capture system. They offer extreme precision and real-time capabilities. They can even be used completely wireless using WLAN technology and a battery pack.

MOBILITY

A motion capture system based on the Oqus FX cameras, is uniquely mobile. The Oqus FX cameras were developed with mobility, robustness and trouble-free operation as key parameters. Communication with the host computer is done through a single Ethernet cable at a speed of 100 Mbps. The cameras are daisy-chained and no additional hub is needed to link them together. Alternatively, wireless communication can be used via an internal WLAN at 54 Mbps.



The Oqus cameras can be run on an optional battery pack. An Oqus FX based system is presently the only system on the market that can be run completely wireless. Oqus is available in an IP67-classed version and can therefore be used in harsh condition environments.

FLEXIBILITY

A range of different size, light-weight, passive retro-reflective markers, as well as battery powered active LED markers, make reliable data capture possible in almost any condition, indoors as well as outdoors. The high resolution series, enable the use of a large quantity of small markers, without sacrificing accuracy. It is even possible to mix the different Oqus FX series within the same system.

USABILITY

Oqus FX cameras are versatile and easy to use. They have a large, high-contrast OLED display showing information such as, the number of markers in view and their intensity. Oqus FX is convection cooled and is therefore completely noiseless during measurements.



Qualisys head

ABOUT QUALISYS

For 20 years, Qualisys has provided superior optical motion capture systems. Qualisys marker based technology is precise, robust in real-time and delivers high quality 3D-data indoor, outdoor or underwater. Qualisys new line of cameras, Oqus, has an embedded high-speed video functionality which makes it possible to record high-speed image digital video or marker data with the same camera.

OQUS FX SPECIFICATIONS

Camera output modes	Marker coordinates, high speed video, streaming video
Built-in camera display	128 × 64 graphical high contrast OLED
Camera body	Custom, die-cast aluminium
Camera size	200 × 145 × 155 mm (7.9 × 5.7 × 6.1 inches)
Weight including optics	2.1 kg (4.6 lbs)
Cooling	Convection cooling
Camera protection level*	Water resistant IP67 housing available
Operating temperature	0-35 °C
Firmware	Upgradeable from host computer
Position data noise level	+/- 1 camera units
Adjustable threshold	Yes
Maximum frame buffer size	1152 Mbyte
Cabeling	Hybrid cable with Ethernet and power
Wired communication	Hubless daisy-chained Ethernet 802.3@100Mbps
Wireless communication*	WLAN 802.11b/g@54Mbps
Power supply	Daisy-chained power from mains adaptor
Power	36-72 VDC, 10-16 VDC (battery) at 30 W maximum
Battery*	Available Q2-2009
Lens types*	Standard 40 degrees HFOV (many other options available)
Strobe types supported*	Infrared, red and cyan

	1.3 MPIXEL	4 MPIXEL
CMOS sensor size (pixels)	1280×1024	2352×1728
Maximum frame rate, (limited)	200 fps	180 fps
Typical latency to external software	6 ms	9 ms
x-coordinate full scale range (camera units)	82000	150000
y-coordinate full scale range (camera units)	65000	110000

QTM FX SPECIFICATIONS

AIM	Automatic Identification of Markers in Real-Time
Tracking	2D/3D/6 DOF Tracking and Preview
Markers	Active/Passive/Cluster Marker Sets
Filtering	User Defined Raw/Filter Data
Real-Time	Streaming via SDK directly into 3rd part software
Licenses	Facility Licensed-No Keys

* Optional accessory/feature

Qualisys reserves the right to change specifications without notice

QUALISYS AB

Packhusgatan 6 · 411 13 Gothenburg · SWEDEN
 Tel. +46 31 336 94 00 · Fax. +46 31 336 94 20
 e-mail: salesfx@qualisys.com · www.qualisys.com